



GSS user will create Corrective Maintenance Notification

1.1. Corrective maintenance

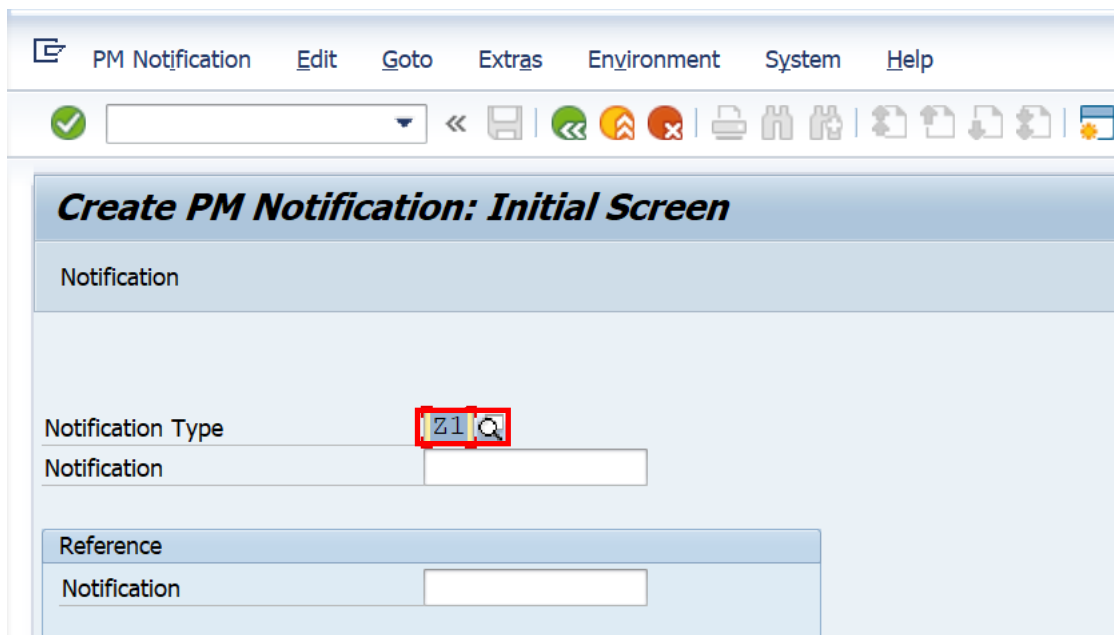
1.1.1. Enter the IW21 in command box.

SAP Menu	<i>Logistics</i> → <i>Plant Maintenance</i> → <i>Notification Processing</i> → <i>Create</i>
Transaction code	IW21



Step	Action
(1)	Enter T-code IW21 and Press enter

1.1.2. Create PM Notification: Initial Screen





Project – SUGAM(BSPTCL)
Corrective Maintenance Process
End User Manual - Plant Maintenance



Step	Action
(1)	Enter Z1 Notification type and press Enter.

1.1.3. Create PM Notification: Corrective maintenance

Maintenance notification Edit Goto Extras Environment System Help

Create PM Notification: Corrective Notificat

Notification: %00000000001 Z1 **Corrective maintenance of transformer**

Notific. Status: OSNO CRTD

Order: []

Notification Shut Down requirement Corrective actions Causes Corrective Data

Reference Object

Functional loc.: FB-SIPARA-KHAGAUL SIPARA-KHAGAUL bay

Equipment: **10000013** 100 MVA TR-1

Assembly: []

Subject

Description: **Corrective maintenance of transformer**

Subject Long Text: []

Step	Action
(1)	Enter the Corrective description.
(2)	Enter the Equipment Number
(3)	Enter the Corrective description and scroll down.



Project – SUGAM(BSPTCL)
Corrective Maintenance Process



End User Manual - Plant Maintenance

1.1.4. Create PM Notification: Corrective maintenance

Maintenance notification Edit Goto Extras Environment System Help

✓

Create PM Notification: Corrective Notificat

Partner

Person respons. 01000089

Reported By YASH_PM1 Notif. Date 11.03.2019 09:57:08

Item

Object Part

Damage

Text

Cause

Cause Text

Entry 1 frm

Additional Data

Resp Person No. 9999999999

SLDC Charging Code

Approval Code of SLDC

ERLDC Charging Code

Approval Code of ERLDC

NLDC Charging Code

Approval Code of NLDC

NEA Charging Code


Approval Code of NEA

Intimation SE(O&M) Y Yes

OCC Approval A Not Applicable

Approval from Load S

SAP

Step	Action
(1)	Enter the Responsible person number, Intimation SE(O&M)
(2)	Enter the user who reported the Corrective
(3)	Enter the person responsible.
(4)	Click  or press Enter.



1.1.5. Create PM Notification: Corrective maintenance

Maintenance notification Edit Goto Extras Environment System Help

Create PM Notification: Corrective Notificat

Notification %00000000001 Z1 Corrective maintenance of transformer

Notific. Status OSNO CRTD

Order

Notification Shut Down requirement Corrective actions Causes Corrective Data

Start/End Dates

Required Start 11.03.2019 09:57:08 Priority 2 2-High

Required End 11.03.2019 10:30:32

Step	Action
(1)	Click on Shutdown requirement Data Tab.
(2)	Enter TheRequired start date and time.
(5)	Enter the required shutdown end date and time.
(6)	Click onset status icon and select the REAP radio button and select the INTC, INTP & INTL.



1.1.6. Set User Status

User Status with Status Number

X	No.	Status	StatusText
<input type="radio"/>	01	CRTD	Notification Created
<input checked="" type="radio"/>	02	REAP	Request for S/D Approval
<input type="radio"/>	03	APRC	Approval from Circle
<input type="radio"/>	04	REJC	Reject by Circle
<input type="radio"/>	05	APRL	Approval from SLDC

User Status Without Status Number

X	Status	StatusText
<input checked="" type="checkbox"/>	INTD	Int.Mail to division office
<input checked="" type="checkbox"/>	INTP	Int.Mail to protection(T&C)
<input type="checkbox"/>	INTT	Int. Mail to Telcom cell

Step	Action
(1)	Select INTC-intimation mail to circle office,if required help from protection select INTPstatus,INTT for Telecom
(2)	Select the REAP- request for shutdown from SLDC.
(3)	Click Ok.
(4)	Scroll Up and click on save.



**Project – SUGAM(BSPTCL)
Corrective Maintenance Process**



End User Manual - Plant Maintenance

1.1.7. Create PM Notification: Corrective maintenance

Step	Action
(1)	Click on save. Mail will be triggered to Circle for approval.

1.1.8. Create PM Notification: Initial Screen

Step	Action
(1)	



**Project – SUGAM(BSPTCL)
Corrective Maintenance Process**



End User Manual - Plant Maintenance

CIRCLE & SLDC Approval process

1.1.9. SAP workflow mail will be trigger to CIRCLE then SLDC

The screenshot shows the SAP Easy Access interface. The search field contains 'sbwp'. Below the menu, the 'Business Workplace of YASHPM1' is shown with an email inbox. The selected email is titled 'Approval of Breakdown maintenanc...' and contains the following text:

Approval of Breakdown maintenanc 20000430 - Breakdown of CT?

Description
The Breakdown maintenanc 20000430 - Breakdown of CT has been created under Maintenance Plant 1100 - TCC-I, JAIPUR and placed to you for approval for

Objects and attachments
• Maint. Notification: 000020000430

Step	Action
(1)	Enter SBWP T-code & press icon



1.1.10. Select PM Notification

Class	Title	Date rece...	Author
▶	Approval of Notification Breakdown 20000231 - breakdown m...	08.02.2016	
▶	Approval of Notification Breakdown 20000229 - 220 KV CT Y ...	08.02.2016	
▶	Approval of Notification Breakdown 20000232 - CVT BURST?	08.02.2016	
▶	Approval of Notification Breakdown 20000230 - bd005?	08.02.2016	
▶	Approval of Notification Breakdown 20000228 - manitenance ...	06.02.2016	

Step	Action
(1)	Double Click Approval of Notification Breakdown 20000229 - 220 KV CT Y ...

Decision Step in Workflow

Workflow Create Import

Approval of 20000229 - 220 KV CT Y Ph Maintenance?

Choose one of the following alternatives

Approve

Reject

Cancel and keep work item in inbox

Description	Objects and attachments
<p>The 20000229 - 220 KV CT Y Ph Maintenance has been created under Maintenance Plant 1800 - TCC-VIII,SIROHI and placed to you for approval for user-status APRD.</p> <p>Select one of the available decision options. This completes the processing of this step.</p> <p>Before you make a decision, you can display the attachments and objects which have been attached to the user decision. You can also add your own attachments.</p> <p>If you choose Cancel, the user decision remains in your inbox for processing.</p>	<ul style="list-style-type: none">Maint. Notification: 000020000229

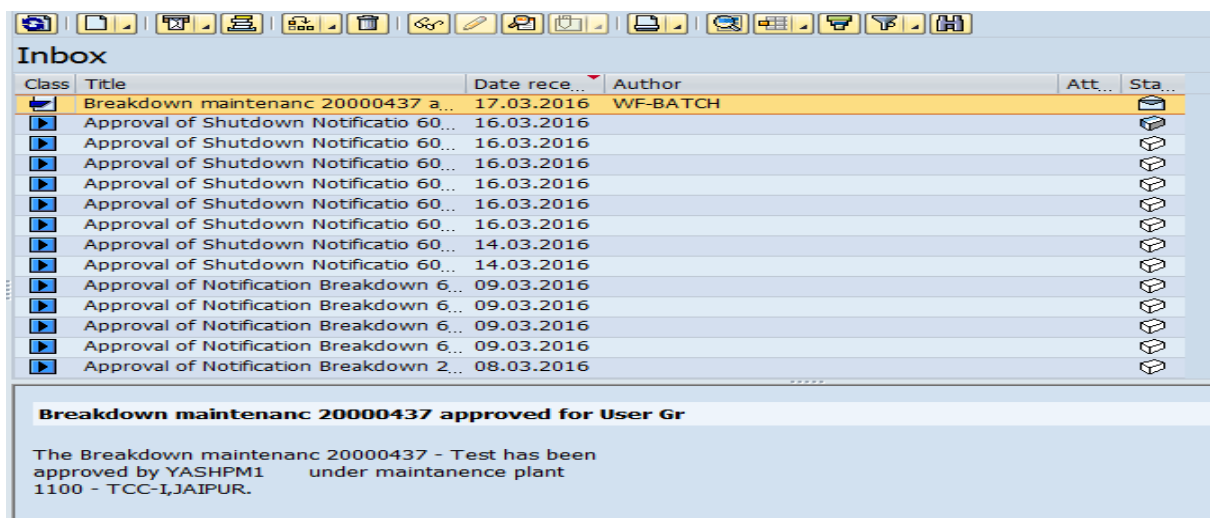
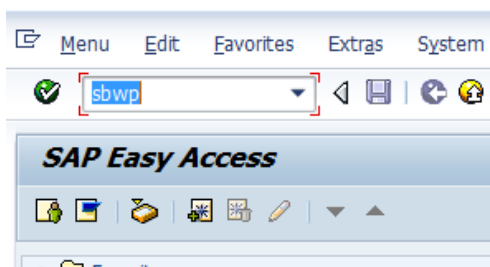


1.1.11. Change PM Notification: Initial Screen



Step	Action
(1)	Click Approve

Approval mail will be trigger to GSS User id





1.1.14. Change PM Notification: Corrective maintenance

Maintenance notification Edit Goto Extras Environment System Help

Change PM Notification: Corrective Notificat

Partner

Notification: 10000018 Z1 Corrective maintenance of transformer

Notific. Status: OSNO APRL

Order:

Notification Shut Down requirement Corrective actions Causes Corrective Data

Reference Object

Functional loc.: FB-SIPARA-KHAGAUL SIPARA-KHAGAUL bay

Equipment: 10000013 100 MVA TR-1

Assembly:

Step	Action
(1)	SLDC cell has approved to start the Corrective process.
(2)	Click on create order icon to create Correctivemaintenance order.

1.1.15. Create Order

Create Order

Order Type: ZM01

Planning Plant: 1100

Business Area:

Main Work Center: O&M / 1100 Operation & Maintenance dept

Step	Action
(1)	Click Continue .



**Project – SUGAM(BSPTCL)
Corrective Maintenance Process**

End User Manual - Plant Maintenance



1.1.16. Object Information

Step	Action
(1)	Click Continue

1.1.17. Create CorrectiveMaintenance order : Central Header

Step	Action
(1)	Click on Operations Tab.



Project – SUGAM(BSPTCL)
Corrective Maintenance Process
End User Manual - Plant Maintenance



1.1.18. Create Corrective Maintenance order : Operation Overview

OpAc	SOP	Work ctr	Plant	Cont...	StTextK	S...	Operation short text
0010		O&M	1100	PM01			Corrective maintenance of transformer
0020		O&M	1100	PM01			Bushing cleaning
0030		O&M	1100	PM01			Power cable change

Step	Action
(1)	Enter the List of operation that is going to perform.

1.1.19. Create Corrective Maintenance order : Component Overview

Item...	Component	Description	Lo...	Reqtd Qty	UM	IC	S...	Slcc	Plnt	OpAc
0010	1000000008			2				1000	1100	
0020										



Project – SUGAM(BSPTCL)
Corrective Maintenance Process

End User Manual - Plant Maintenance



Step	Action
(1)	Click on components Tab.
(2)	Enter the Material number.
(3)	Enter the required Quantity
(4)	Enter the Plant and storage Location.
(5)	Enter the Material Valuation Type. Press Enter and then enter operation number for which component is required.

Create Breakdown Maintenance order : Operation Overview

Order: ZM02 \$000000000001 breakdown
Sys.Status: CRID MANC NTUP CRID

HeaderData | Operations | Components | Costs | Objects | Additional Data | Location | Planning | Set user status

General	Internal	External	Dates	Act. Data	Enhancement	Ex. Factor	Catalog	
Op...	SOp	Work ctr	Plant	Co...	StTextK	S..	Operation short text	L...
0010		O&M	1100	PM01			oil replcement	
0020		O&M	1100	PM01			Motor replacemen	
0030		O&M	1100	PM01			gas kit work	
0040		O&M	1100	PM01				
0050		O&M	1100	PM01				
0060		O&M	1100	PM01				

Step	Action
(1)	Click on user status Icon.



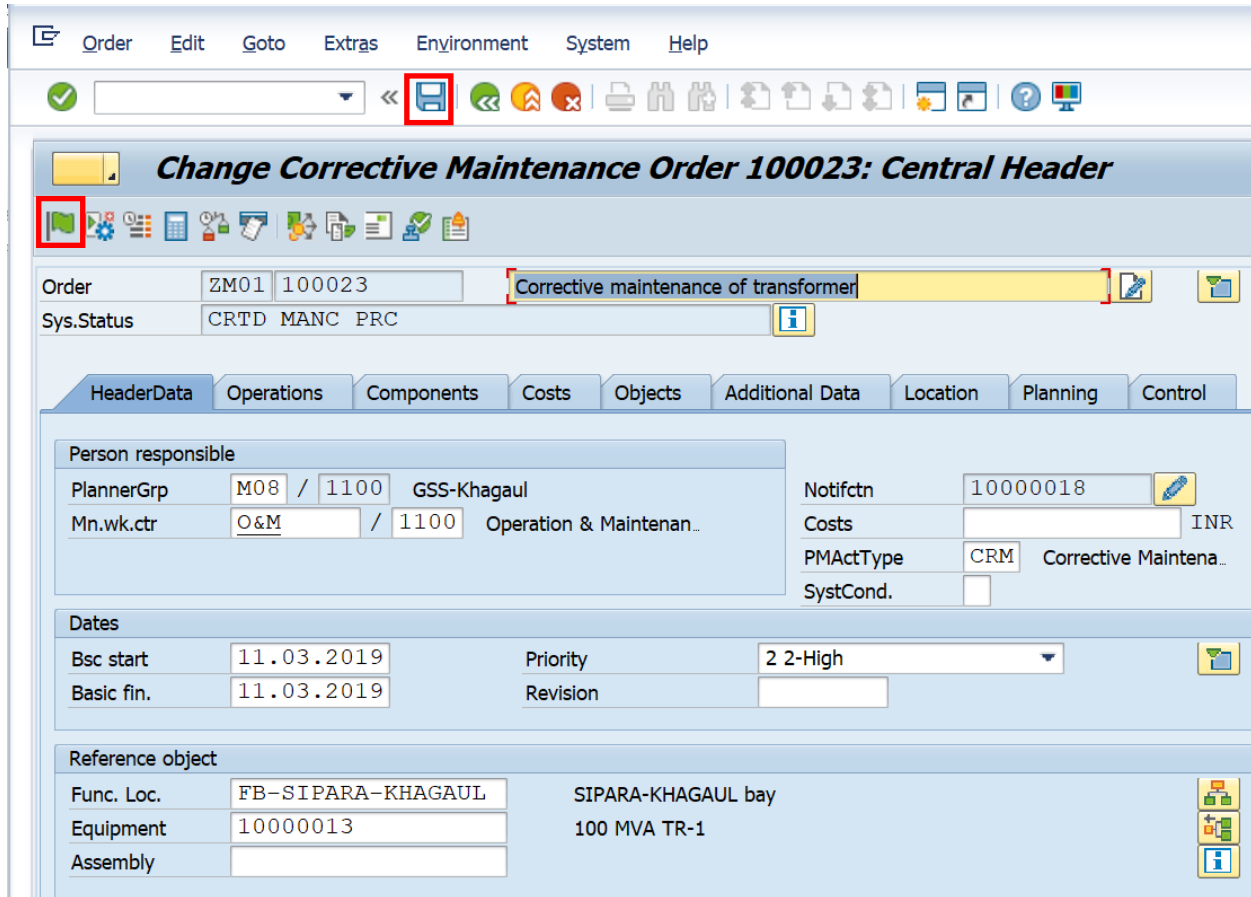
Project – SUGAM(BSPTCL)
Corrective Maintenance Process




End User Manual - Plant Maintenance

Step	Action
(1)	Set user status to Permit Issue
(2)	Click On required checkbox
(3)	Click On continue icon

1.1.20. Change Corrective Maintenance order: Central Header



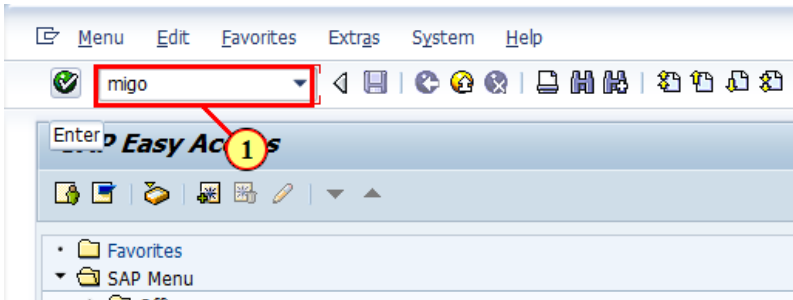
Step	Action
(1)	To release the order click on  .
(2)	Click on save.

Goods Issuing to maintenance order process

1.1.21. Goods Issue

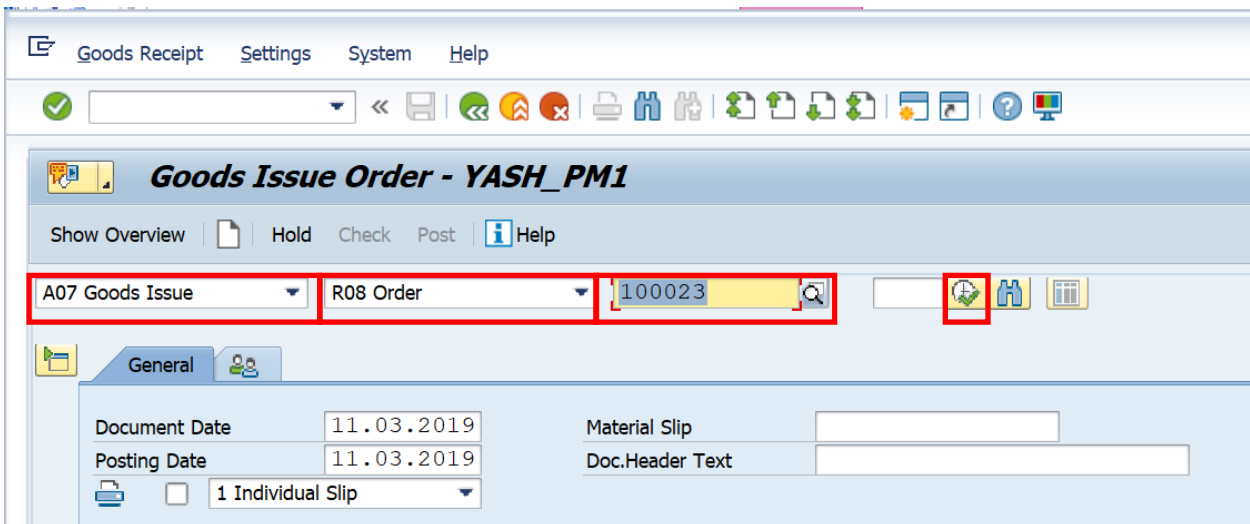
Note: Goods Issue means issuing the material from GSS store to Work area against the Maintenance order.

SAP Menu	<i>Logistics</i> → <i>Material management</i> → <i>Inventory Management</i>
Transaction code	<i>Goods movement</i> → MIGO



Step	Action
(1)	Enter MIGO To issue the Components from store against maintenance order.

1.1.22. Goods Issue order



Step	Action
(1)	select the Goods Issue Option.
(2)	Select the order
(3)	Enter the maintenance order.
(4)	Execute the order.



Project – SUGAM(BSPTCL)
Corrective Maintenance Process

End User Manual - Plant Maintenance



1.1.23. Goods Issue Order

Goods Receipt Settings System Help

Goods Issue Order 100023 - YASH_PM1

Show Overview Hold **Check** **Post** Help

Posting Date: 11.03.2019 Doc.Header Text:

1 Individual Slip

Line	Mat. Short Text	W OK	Qty in UnE	EUn	SLoc	Order
1	Power cable 2C x 6 Sq	<input type="checkbox"/>	2	KM	C/S,Fatuha	100023

Material Quantity Where Reservation Partner Account Assignment

Movement type: 261 GI for order Stock type: Unrestricted-Use

Plant: Trans Circle Patna 1100 Storage location: C/S,Fatuha 1000 Storage Bin: STORE 1

Goods recipient: Unloading Point:

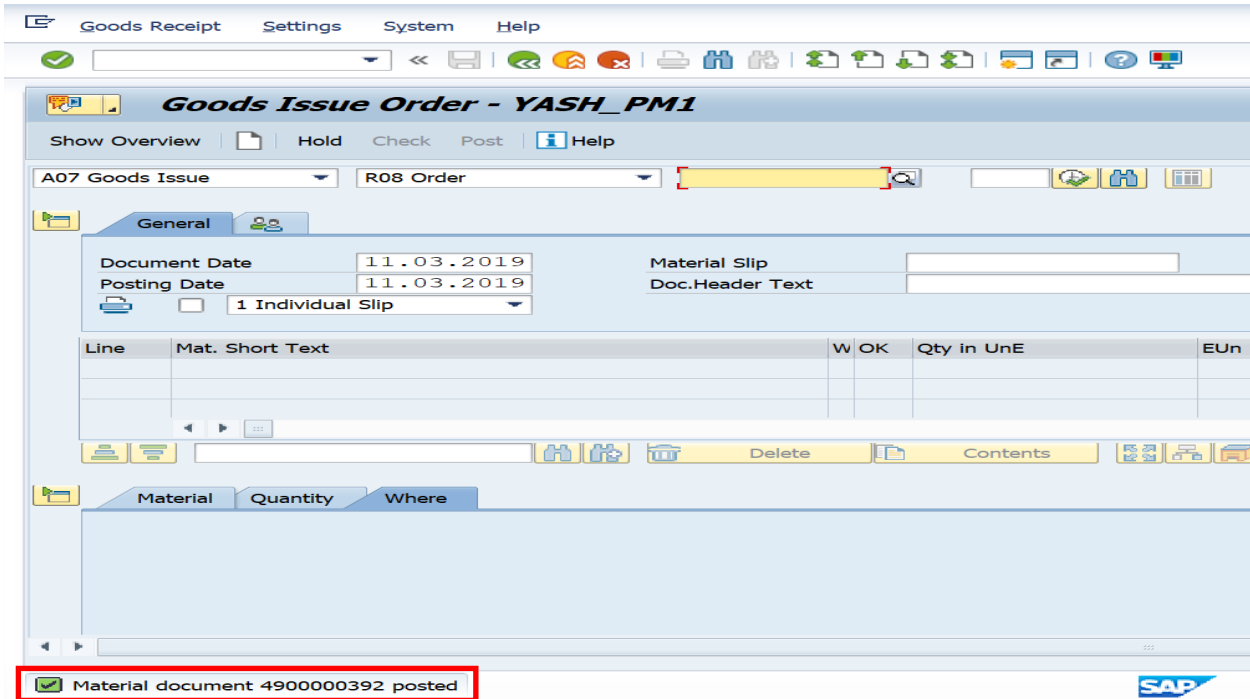
Text:

Item OK Line: 1

Step	Action
(1)	Put tick mark for item ok check box.
(2)	Click on the check button to check whether MIGO was filled correct.
(3)	After Completing check then click on POST button the material will be issued against order.



1.1.24. Goods Issue Order



Step	Action
(1)	After Posting was completed, Material document will be created.

After execution of maintenance work GSS User will Requested for charging code.

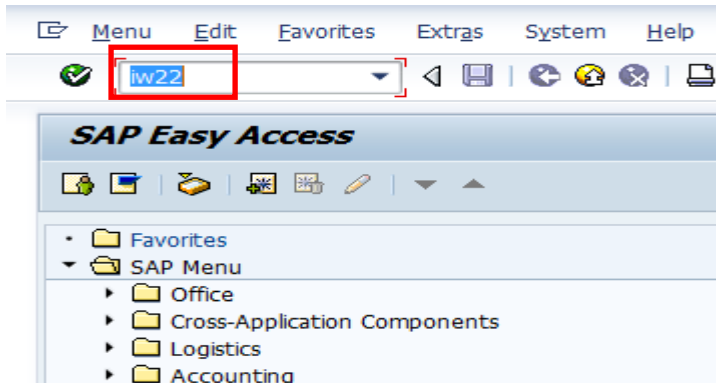
1.1.25. Change PM Notification

SAP Menu	<i>Logistics</i> → <i>Plant Maintenance</i> → <i>Maintenance Processing</i> → <i>Notification Change</i> →
Transaction code	IW22

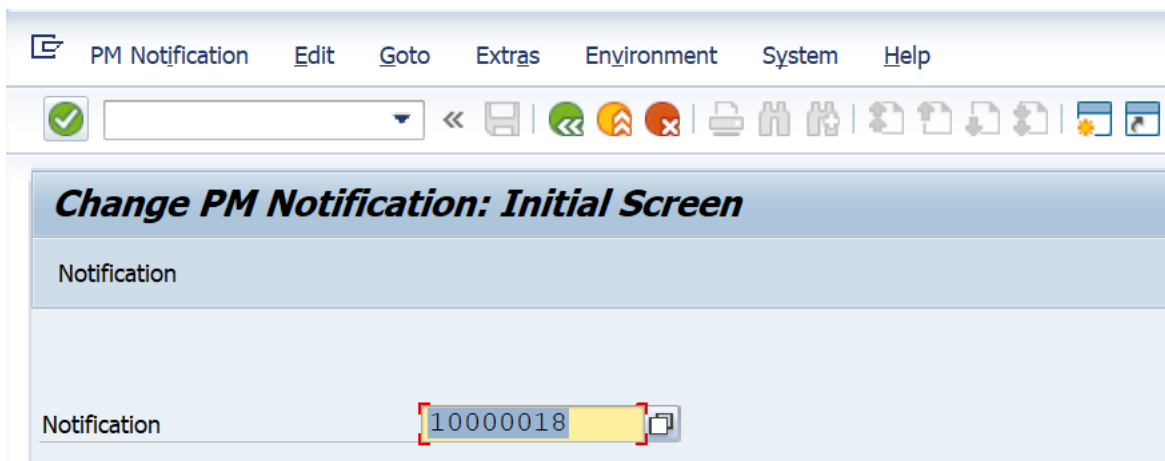


Project – SUGAM(BSPTCL)
Corrective Maintenance Process

End User Manual - Plant Maintenance



Step	Action
(1)	Enter IW22 (T code) to Change notification and press enter.



Step	Action
(1)	Enter notification number and press Enter.



Project – SUGAM(BSPTCL)
Corrective Maintenance Process

End User Manual - Plant Maintenance



1.1.26. Change PM Notification: Corrective maintenance

Maintenance notification Edit Goto Extras Environment System Help

Change PM Notification: Corrective Notificat

Partner

Notification 10000018 Z1 Corrective maintenance of transformer

Notific. Status NOPR ORAS APRL

Order 100023

Notification Shut Down requirement Corrective actions Causes Corrective Data

Reference Object

Functional loc. FB-SIPARA-KHAGAUL SIPARA-KHAGAUL bay

Equipment 10000013 100 MVA TR-1

Assembly

Subject

Description Corrective maintenance of transformer

Subject Long Text

Step	Action
(1)	Select the Malfunction Tab and enter malfunction end date/time
(2)	Enter Actual shutdown End date and time.
(3)	Change the User status(i.e. Asking LD for Charging Code) By click on



1.1.27. Set User Status

User Status with Status Number

X	No.	Status	StatusText
<input type="radio"/>	04	REJC	Reject by Circle
<input type="radio"/>	05	APRL	Approval from SLDC
<input type="radio"/>	06	REJL	Reject by SLDC
<input checked="" type="radio"/>	07	RECD	Request for charging code
<input type="radio"/>	08	ARCD	Charging code issue from SLDC

User Status Without Status Number

X	Status	StatusText
<input type="checkbox"/>	INTD	Int.Mail to division office
<input type="checkbox"/>	INTP	Int.Mail to protection(T&C)
<input type="checkbox"/>	INTT	Int. Mail to Telcom cell

Step	Action
(1)	After selecting the request code click ok.
(2)	Select the Requesting SLDC for charging code and press Enter.



Project – SUGAM(BSPTCL)
Corrective Maintenance Process

End User Manual - Plant Maintenance



1.1.28. Change PM Notification: Corrective maintenance

Maintenance notification Edit Goto Extras Environment System Help

Change PM Notification: Corrective Notificat

Partner

Notification 10000018 Z1 Corrective maintenance of transformer

Notific. Status NOPR ORAS RECD

Order 100023

Notification Shut Down requirement Corrective actions Causes Corrective Data

Reference Object

Functional loc. FB-SIPARA-KHAGAUL SIPARA-KHAGAUL bay

Equipment 10000013 100 MVA TR-1

Assembly

Subject

Description Corrective maintenance of transformer

Subject Long Text

Step	Action
(1)	Save the Notification.



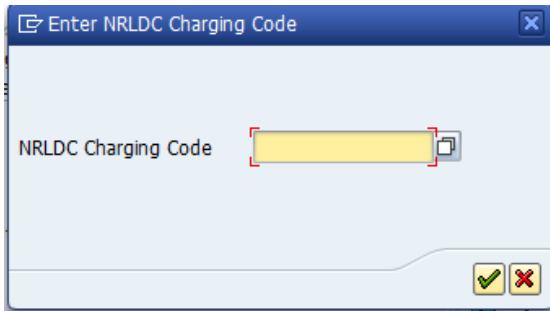
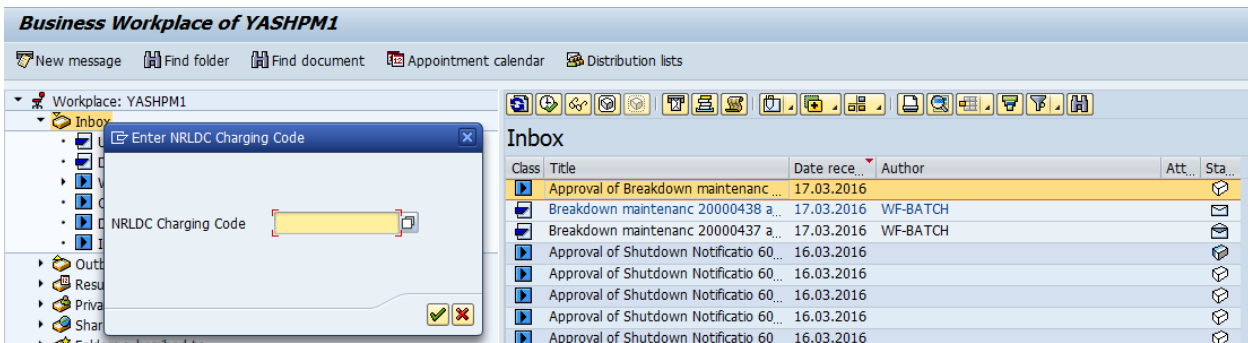
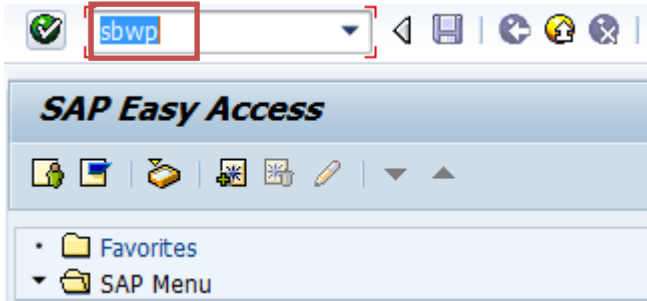
Project – SUGAM(BSPTCL)
Corrective Maintenance Process



End User Manual - Plant Maintenance

Workflow mail will be trigger to LD cell

SLDC user will do following entry in system



Step	Action
(1)	Enter T-code- SWPB & double click on request mail if NRLDC charging code available can enter in field or click on



Project – SUGAM(BSPTCL)
Corrective Maintenance Process



End User Manual - Plant Maintenance

Charging code will be automatic generated in Maintenance notification

Step	Action
(1)	Automatic Charging code generated 065/02 .

Charging code issue by LD mail will be trigger to GSS user id



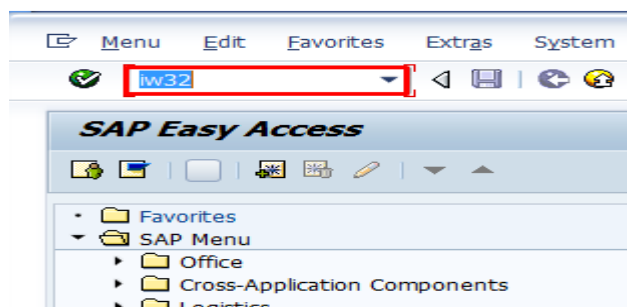
GSS user will do following steps

Note: Complete (Technically) means closing the Corrective Maintenance order from Technical side.

1.1.29. Complete the Corrective Maintenance Order

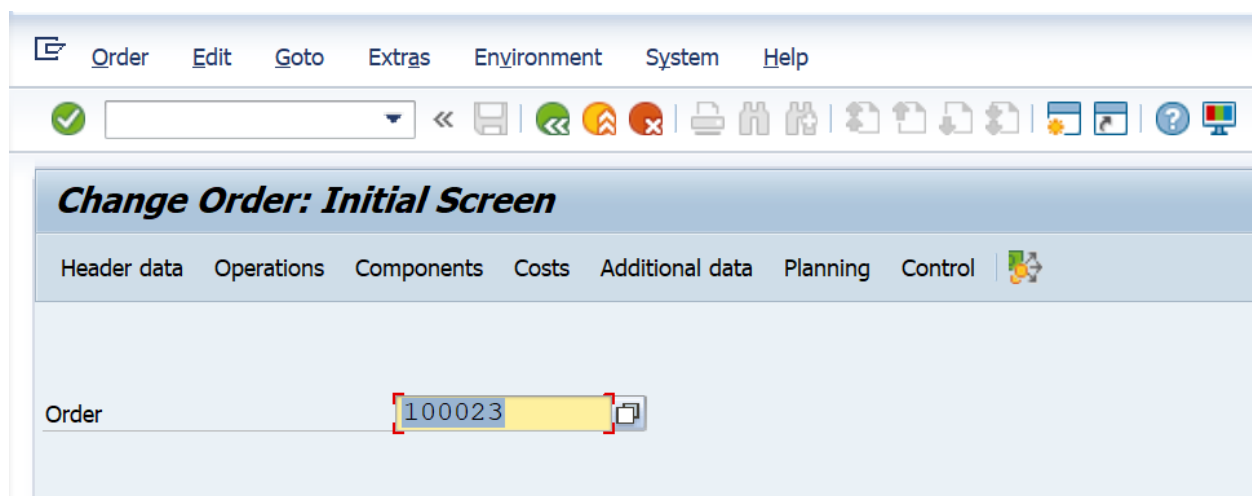
SAP Menu	Logistics → Plant Maintenance → Maintenance Processing Order Change
Transaction code	IW32

After getting charging code from LD, go to order for completing order Technically.



Step	Action
(1)	Enter IW32 and press Enter.

1.1.30. Change Order: Initial Screen





Project – SUGAM(BSPTCL)
Corrective Maintenance Process



End User Manual - Plant Maintenance

Step	Action
(1)	Enter Order number and press Enter.

Order: ZM02 20000223 | breakdown

Sys.Status: REL NMAT PRC | PRIS BROD DPIO DSCD EICO

HeaderData | Operations | Components | Costs | Objects | Additional Data | Location | Pie

Person responsible

PlannerGrp: 001 / 1100 GSS-Katra | Notifctn: 200000372

Mn.wk.ctr: O&M / 1100 Operation & Maint... | Costs: 0.00 INR

PMActType: BD Breakdown

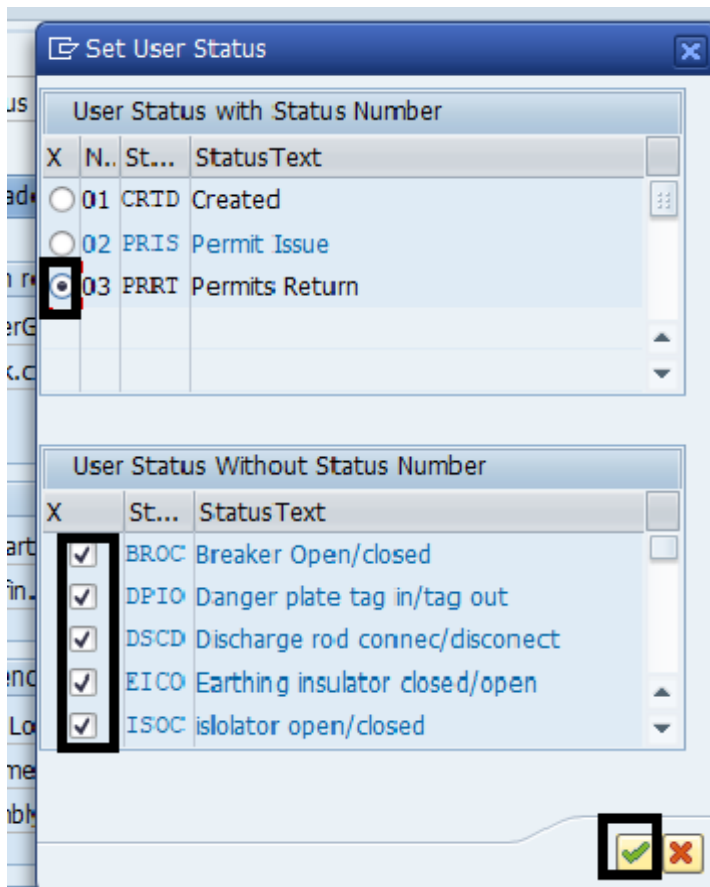
Step	Action
(1)	Click on user status Icon.



Project – SUGAM(BSPTCL)
Corrective Maintenance Process



End User Manual - Plant Maintenance




Step	Action
(1)	Set user status to Permit Return
(2)	Click On required checkbox
(3)	Click On continue icon



Project – SUGAM(BSPTCL)
Corrective Maintenance Process
End User Manual - Plant Maintenance



Step	Action
(1)	Click Complete (technically)  .

1.1.31. Complete

Step	Action
(1)	Enter the Malfunction end Date and time.
(2)	Enter the Reference date and time to complete the order technically.

1.1.32. Close the Corrective Maintenance order

SAP Menu	<i>Logistics</i> → <i>Plant Maintenance</i> → <i>Maintenance processing</i> → Order → Change
----------	---

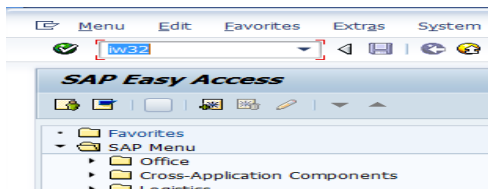




Project – SUGAM(BSPTCL)
Corrective Maintenance Process
End User Manual - Plant Maintenance

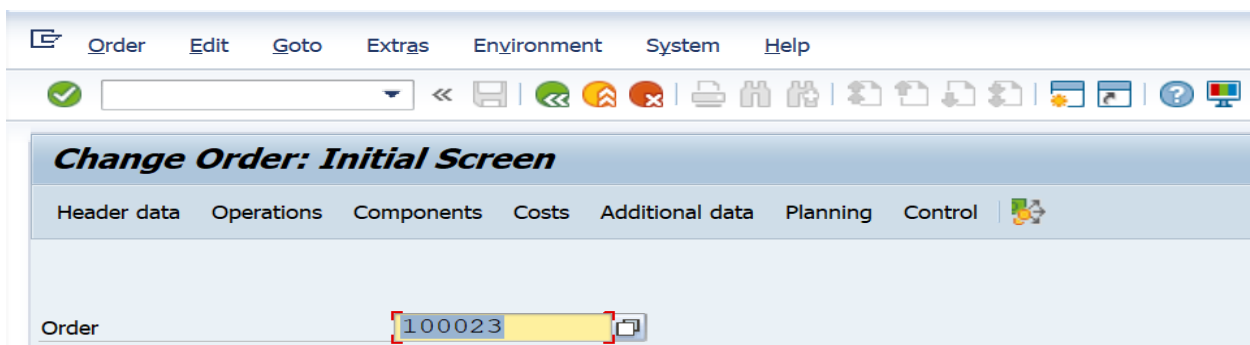


Transaction code	IW32
------------------	------



Step	Action
(1)	Enter the IW32 (T code) to close the maintenance order.

1.1.33. Change Order: Initial Screen



Step	Action
(1)	Enter Order number and press Enter.



Project – SUGAM(BSPTCL)
Corrective Maintenance Process



End User Manual - Plant Maintenance

1.1.34. Closing the Corrective Maintenance order: Central Header

Order: ZM01 00023 Corrective maintenance of transformer
Sys.Status: TECO GMPS JBFI MACM PRC SETC

Complete (business)

Person responsible
PlannerGrp: M08 / 1100 GSS-Khagaul
Mn.wk.ctr: O&M / 1100 Operation & Mainten...
Notifctn: 10000018
Costs: 0.00

Step	Action
(1)	Click on Complete business to close the Maintenance order.